

IDEAL 3000 SERIES

10506/IDE

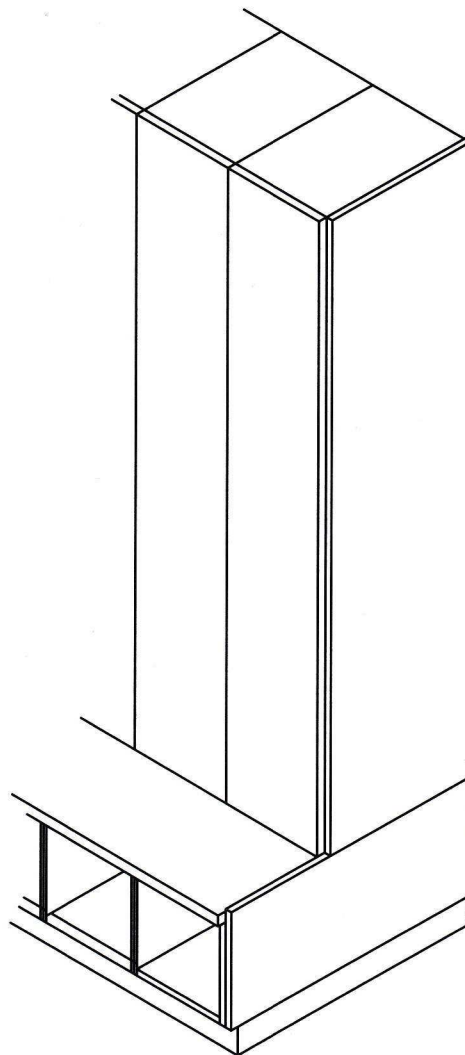
Buyline 5986

PLASTIC LAMINATE LOCKERS

(WITH INTEGRAL BENCH)

FURNITURE QUALITY & FIRE RETARDANT

- Custom & Standard Designs
- Class II-B Fire Retardant
- Unlimited Color Selection
- Formica®, Wilsonart®, Nevamar®, Pionite®, Laminart®, Micarta®.
- 3 Year Warranty



SPECIFICATIONS

MATERIAL: Fire-retardant, formaldehyde-free, 48 lb. industrial grade particle board

ASSEMBLY: Blunt joint & nail

FINISH: Plastic laminate, class II-B, fire-retardant, water resistant, NEMA-LD-1 vertical grade .028" thick high pressure plastic laminate exposed

STANDARD DIMENSIONS

Width (a)	Depth (b)	Height (c)
12" or 16"	18" or 20"	72", 78" or 84"



P.O. BOX 4090
ONTARIO, CA 91761

(951) 727-8600
FAX: (951) 727-8609

www.ideallockers.com

Formica, Wilsonart, Nevamar, Pionite, Laminart, and Micarta are registered trademarks of their respective corporations.

AIA SPECIFICATIONS

SECTION 10506 – PLASTIC LAMINATE LOCKERS WITH INTEGRAL BENCH

Requirements of Divisions 0 and 1 apply to work of this Section.

1.0 GENERAL

1.1 Scope of Work Included:

- The furnishing and installation of prefabricated WIC Type I multiple self-supporting modular water resistant, fire retardant, formaldehyde-free plastic laminate lockers and integral bench.

1.2 Related Work Specified Elsewhere:

- Architectural Woodwork – Section 06400
- Wood and Plastic Laminated Doors – Section 08200
- Wood windows – Section 08210

1.3 Standards:

- Minimum standard for water resistant, fire retardant plastic laminate lockers and integral bench shall conform to WIC "Manual of Millwork" latest edition.

1.4 Quality Assurance:

- All parts and hardware shall be WIC compliant, structurally sound and free from defects, in material and workmanship under normal use and service for a period of three (3) years. All lock parts warranted for a period of one (1) year by the respective manufacturer.

1.5 Submittals:

- Submit two copies of WIC compliant shop drawings for all items of finish work before fabrication.
- Manufacturer's descriptive data of all materials and products construction, overall dimensions for installation of lockers, accessories, and trim.
- Submit 3 color samples of the laminate specified.

1.6 Product Handling, Delivery & Storage:

- Deliver all lockers when project construction is ready for installation. Store lockers in dry, ventilated area and protect all finishes from soiling and damage during handling.

2.0 Products

2.1 Grades:

- Furnish Ideal 3000 Series furniture grade plastic laminate lockers with integral bench in accordance with WIC "Manual of Millwork", Section 15 – Plastic Covered Casework for Custom and Premium grades.

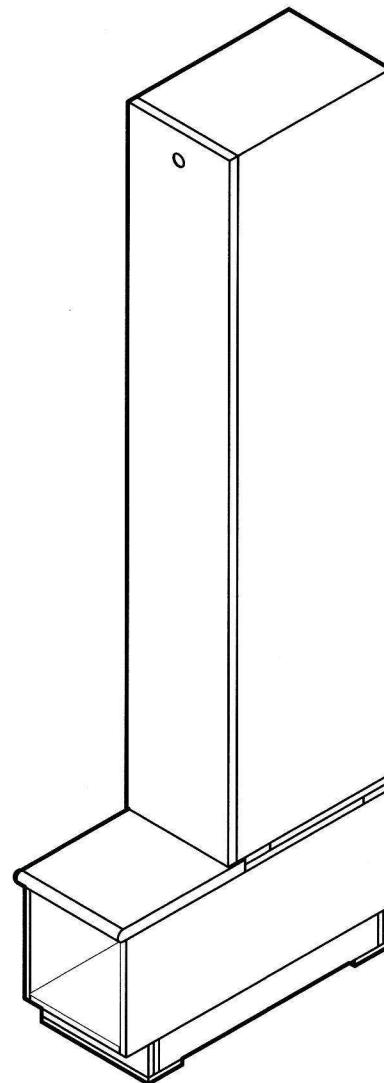
2.2 Acceptable Manufacturer:

- Ideal Products, Inc. P.O. Box 4090, Ontario, CA 91761. Lockers to be Ideal 3000 Series.

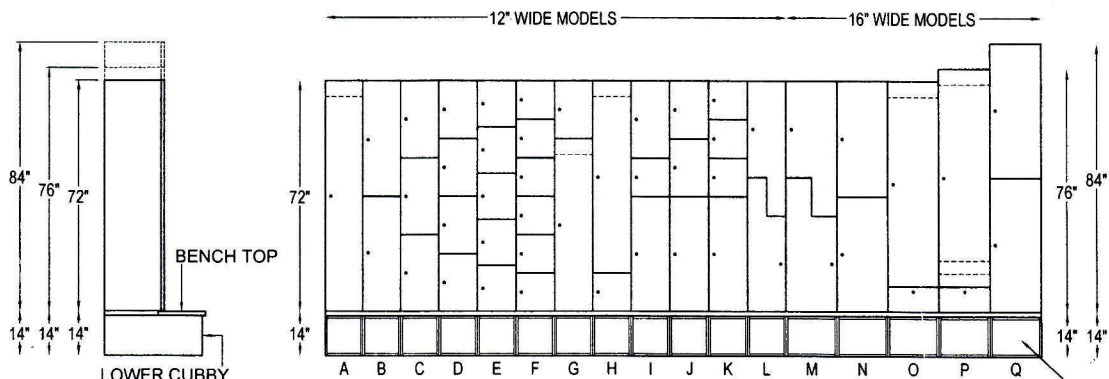
2.3 Materials

- Locker Interior:
 - Interior vertical surfaces of sides and back panel are finished with 6mil frosty white vinyl.
 - Interior horizontal surfaces of shelves, tops and bottoms are finished with black thermal fused melamine.
 - Locker frame constructed of 48lb. industrial grade particleboard core ANSA A208.1 grade 1-M-2, 45 (Sides=5/8", Shelves=3/4", Back=1/4")
 - Frame edged with either vinyl t-molding or self-edging.
 - Locker venting through rear panel 32mm system.
- Doors, End Panels, Cubbies, Sloped Tops, and Fillers
 - Plastic laminate high pressure, class II-B fire retardant, VGS-GP32, 3/4"STD PB.UL & HPMA.

(con't)



3000-1
W/ LOWER CUBBY



- 2a. Radius Corners edges finished with 13/16" convex face, polyethylene vinyl t-molding (VT).
- 2b. Square corners for edges finished with .032" high pressure plastic laminate (SE) or 1mm polyvinylchloride tape (PVC).
3. 3/4" thickness 48lb. density industrial grade particle board.

2.4 Hardware:

- a. Hinges, heavy duty, select either:
 1. Exposed knuckle, black enamel finished, 2 3/4" (EH)
 2. Euro-concealed, 6 way adjustable, 125 degree opening, self-closing, nickel plated, lifetime guarantee (CH).
- b. Locks, heavy duty, specify:
 1. Padlock hasp either recessed (RP), surface mounted (SP) or campadlock hasp chrome or brass finish (CPH). Recessed and surface mounted padlock hasp is thru-bolted, case hardened steel, cadmium plated.
 2. Keyed Locksets include 2 keys per lock and master keyed, 1500 KD, chrome or brass finish (KL).
 3. Dial combination with five changeable codes and master key bypass, nickel or brass finish (DC).
 4. Pushbutton combination locksets with over 2000 different combinations, fully mechanical, satin chrome or brass (PC).
 5. Coin Collect (CC), Coin Return (CR), Token Operated (TO) or Card Operated (CO) with user and manager key.
 6. Digital Combination, battery operated, electronic for either permanent (KP) or temporary (KT) usage, nickel, chrome or brass finish.
- c. Clothes hooks, aluminum or brass finished
 1. Side mounted double prong
 2. Ceiling hung double prong
- d. Coat Rods, nickel plated.
- e. Number Disc 1 1/4" recessed, 3/8" numerals, satin chrome, satin brass, or black.

2.5 Fabrication:

- a. Lockers shall be fabricated using blunt joint, nail and screw joinery.
- b. Fabricate lockers square, rigid, and without warp.
- c. Machine all parts and attachment holes accurately and without chips.
- d. Fabricate corners, fillers, scribes, tops as required for installation.

3.0 Execution

3.1 Construction:

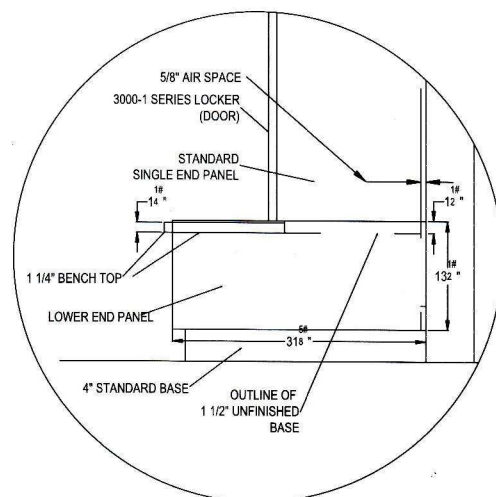
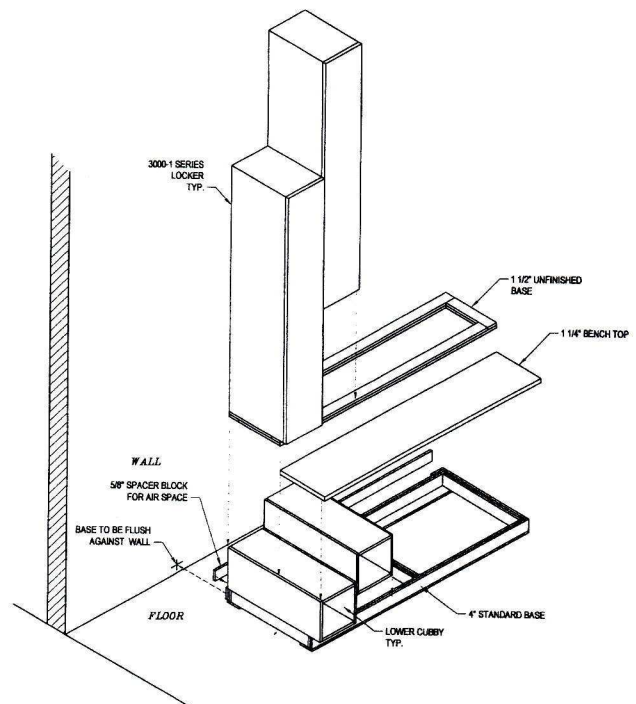
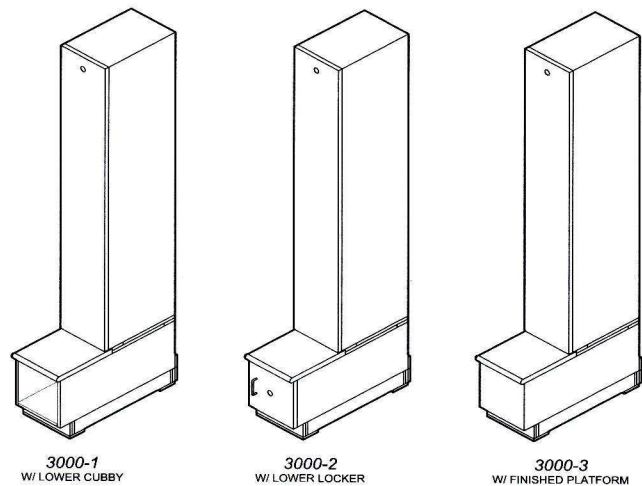
- a. Conform to requirements of WIC "Manual of Millworks", latest edition, for joinery requirements using blunt joint, nail and screw construction.

3.2 Installation:

- a. Install lockers at the locations shown in accordance with manufacturer's instructions for plumb, level, rigid and flush installation.
- b. Lockers can be easily installed on a standard prefabricated base as supplied by manufacturer allowing for 2" toe kick.
- c. Place 4x29x72" prefabricate unfinished base sections one next to the other per plan, trim to fit when necessary and level.
- d. Stack lower cubby, locker or platform cubes on base, one next to the other, attach using manufacturer supplied fasteners through predrilled holes.
- e. Place 1 1/2 x 17x72" prefabricated unfinished bases, one next to the other on top of the lower cubby, locker or platform.
- f. Stack lockers on top to raised platform assembly.
- g. Fasten locker frames to each other with chromium plated t-nuts and hexhead screws through holes predrilled at factory.
- h. Secure banks of lockers every 4 to 5 feet to walls or wall studs for earthquake resistance with wallstraps as supplied by manufacturer.
- i. Install prefabricated benchtop on to platform in front of lockers. Use predrilled dowelling for assembly. Cut to fit when necessary.
- j. Install end and corner fillers and caps, cut to size in field per plans.
- k. Install end panels, sloped tops, finished tops.
- l. Install number discs, clean lockers, remove all related trash and debris from jobsite.

3.3 Clean-up:

- a. Upon completion of the work, remove surplus materials, rubbish and debris resulting from the operations under the section, including equipment and implements of service, and leave the entire structure and site insofar as the work of this section concerned in a neat, clean, and acceptable condition.



PRODUCT SPECIFICATIONS

I. Frame Components

a. Lockers

1. sides = 5/8" 48lb. density industrial grade 1-M-2, 45 particle board, 6mil frosty white low pressure laminated vinyl.
2. shelves = 3/4" 48lb. density industrial grade 1-M-2 45 particle board, black thermal-fused melamine.
3. backs = 1/4" 48lb. medium density fiberboard, 6mil frosty white low pressure laminated vinyl, ventilated.

b. Cubbies

1. sides = 3/4" 48lb. density industrial grade 1-M-2 45 particle board, .032" verticle grade fire retardant high pressure plastic laminate.

c. Lower Locker and Platform

1. sides, = 3/4" 48lb. density industrial grade 1-M-2 45 particle board, white thermal fused melamine.

II. Frame Construction = Blunt joint, nail and screw.

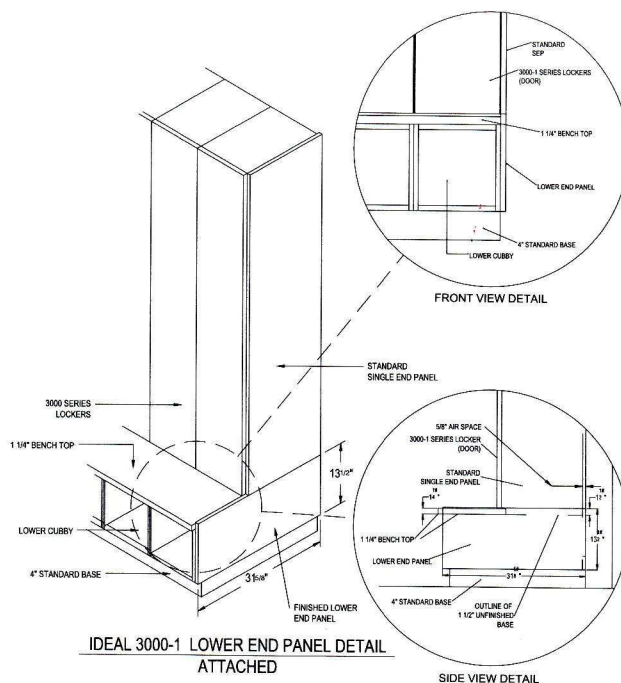
III. Edging (select one)

- a. Vinyl t-molding, 13/16" convex face, center barb, polyethylene (VT) black, white, tan, brown, or grey.
- b. Self-edging, (SE) .032" thick high pressure plastic laminate or 1mm PVC (PVC) polyvinylchloride to match plastic laminate.

IV. Hinges (select one)

- a. Exposed Knuckle, heavy duty 2 3/4" five knuckle, rolled pin. Black enamel.
- b. Euro-concealed, heavy duty, lifetime guarantee, 6-way adjustable nickel plated, 125 degree opening.

V. Doors = 3/4" fire retardant high pressure plastic laminate two sides and 48lb. density industrial grade 1-M-2 45 particle board core.



ORDERING INSTRUCTIONS

Examples: *Ideal 3000-1 Series, Model L, 12x18x72" PL, VT, EH, RP*
 or (1) (2) (3) (4) (5) (6) (7)
Ideal 3000-2 Series, Model A, 16x18x72", PL, PVC, CH, KL

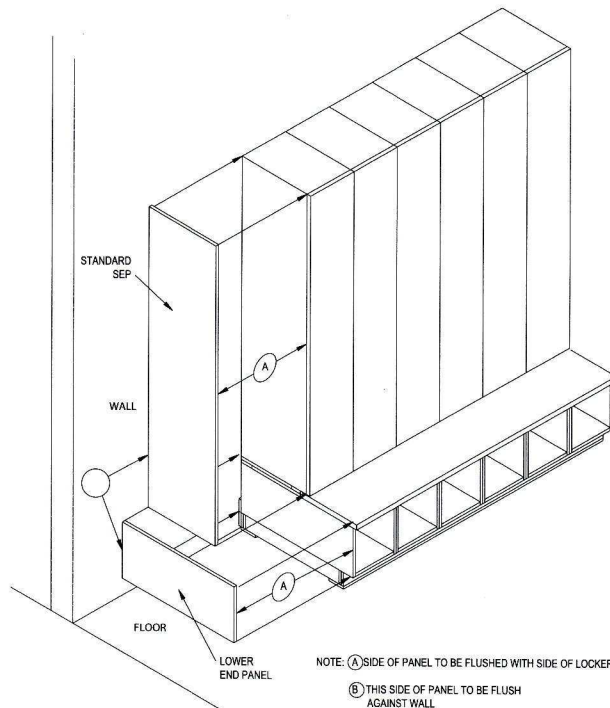
- (1) Specify Ideal 3000 Series Plastic Laminate lockers with integral postformed plastic laminate seat; and 3000-1 for lower cubby, 3000-2 for lower locker or 3000-2 for lower platform to match lockers.
- (2) Specify any locker style from manufacturers standard or custom sizes. Model L indicates executive style double tier and Model A indicates single tier lockers.
- (3) Specify locker frame size. Select from standard or custom sizes.
- (4) Specify plastic laminate, vertical grade, fire retardant, high pressure from Wilsonart, Formica, Nevamar, Pionite, Laminart, Micarta, etc. full product lines.
- (5) Specify edging, either (VT) vinyl t-molding, (SE) self-edging
- (6) Specify hinge, either (EH) exposed knuckle or (CH) euro-concealed.
- (7) Specify lock, (RP) Recessed padlock hasps, (KL) keyed lockset, (DC) dial combination lockset (CC) coin collection, etc.

WARRANTY

We warranty our products to be free of defects in materials and workmanship limited to three years from the original date of purchase.

DETAIL AND SUPPORT DATA

Due to the nature of manufacturing custom-designed lockers, lead times will vary; please consult factory. The policy has been established for quoting prices on a per job basis. And, prices are determined by locker specification and locker room layout.



WILSONART PRODUCTS, INC.
 P.O. BOX 4090 ONTARIO CA 91761
 (951) 727-8600 FAX (951) 727-8609