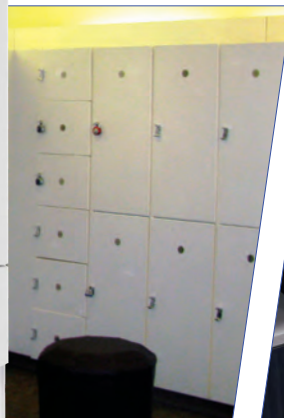
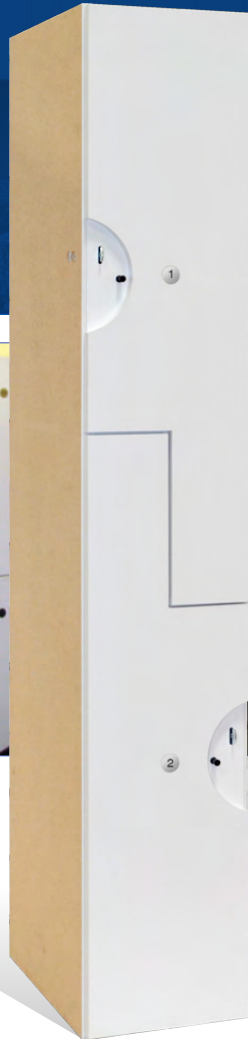


# **MED-X 2000 SERIES**

## **PLASTIC LAMINATE LOCKERS**



**PRODUCTS, INC.**

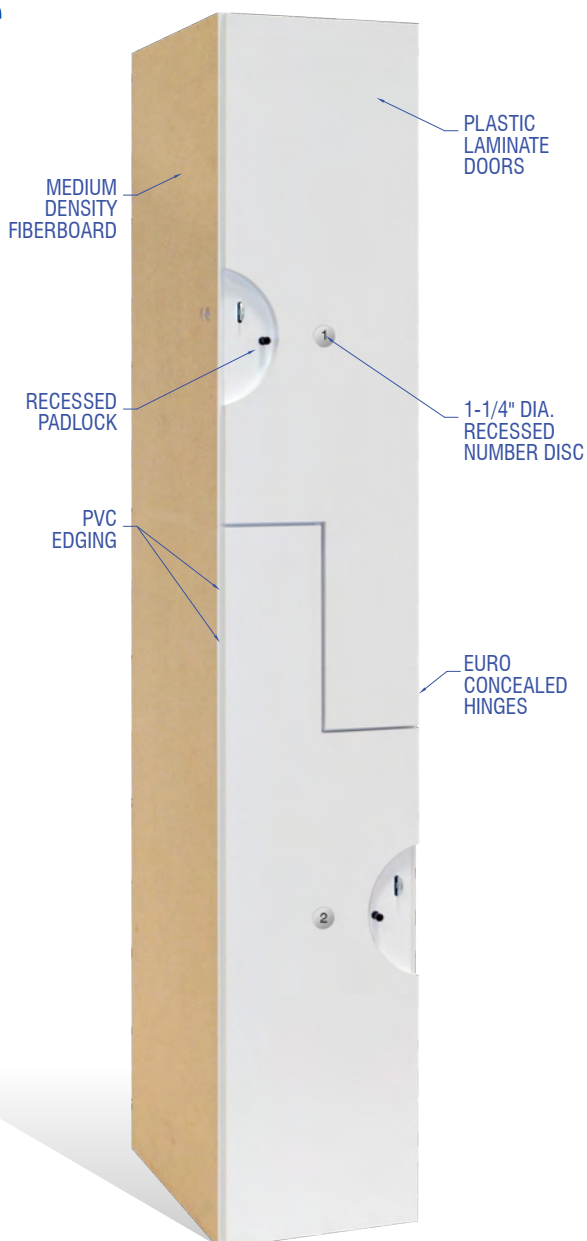
P.O. BOX 4090 • ONTARIO, CA 91761 • (951) 727-8600 • (951) 727-8612 FAX • [WWW.IDEALOCKERS.COM](http://WWW.IDEALOCKERS.COM)

# MED-X 2000 SERIES PLASTIC LAMINATE LOCKERS



The standard **Med-X 2000 Model L** locker configuration (12"W x 18"D x 72"H) provides 100 storage units within 51 linear feet. Standard features include water resistant and fire retardant high pressure plastic laminate doors with square corners, self or PVC edging, keyed lockset, nickel plated concealed hinges, aluminum or brass clothes hooks, nickel plated coat rods and number discs in satin chrome, satin brass or black finishes.

The frames are constructed from firber resin semi-plastic, formaldehyde-free, 48lb density, moisture resistant, exterior grade medium density fiberboard (MDF) using polyurea resin and meeting ASTM D1037-87 six cycle accelerated aging test. Doors are plastic laminate, high pressure, class II-B fire retardant, water resistant, NEMA-LD-1 vertical grade .028" thick high pressure plastic laminate exposed with square corners. Frames and doors are edged with either high pressure plastic laminate self-edging or PVC thermal glued tape to match your plastic laminate selection. Interior surfaces of sides and back panel are finished with 6 mil frosty white vinyl. Interior horizontal surfaces of shelves, tops and bottoms are finished with black thermal-fused melamine.


[LEARN MORE](#)


## Features

- Custom and standard designs
- ASTM Six Cycle Tested MDF Core Materials
- Class IIB Fire Retardant Plastic Laminate Doors w/Square Corners
- PVC or Self-Edging to Match Exterior Laminate
- Fiber Resin Semi-Plastic, Formaldehyde-Free, 48lb. Density, Moisture Resistant, Exterior Grade MDF
- Euro Concealed Hinges
- Unlimited color and texture selections
- Formica®, Wilsonart®, Nevamar®, Pionite®, and Laminart®
- Nickel Plated Coat Rods & Aluminum or Brass Clothes Hooks
- Number Discs in Satin Chrome, Satin Brass or Black
- Three Year Warranty

## INSTALLATIONS



## UNLIMITED COLORS & TEXTURES

With seemingly endless combinations of vibrant, versatile solid colors, inspirational patterns and textures such as woodgrains, including designs inspired by today's popular granite, marble and quartz looks, that are richly dimensional, realistically textured and intrinsically practical.

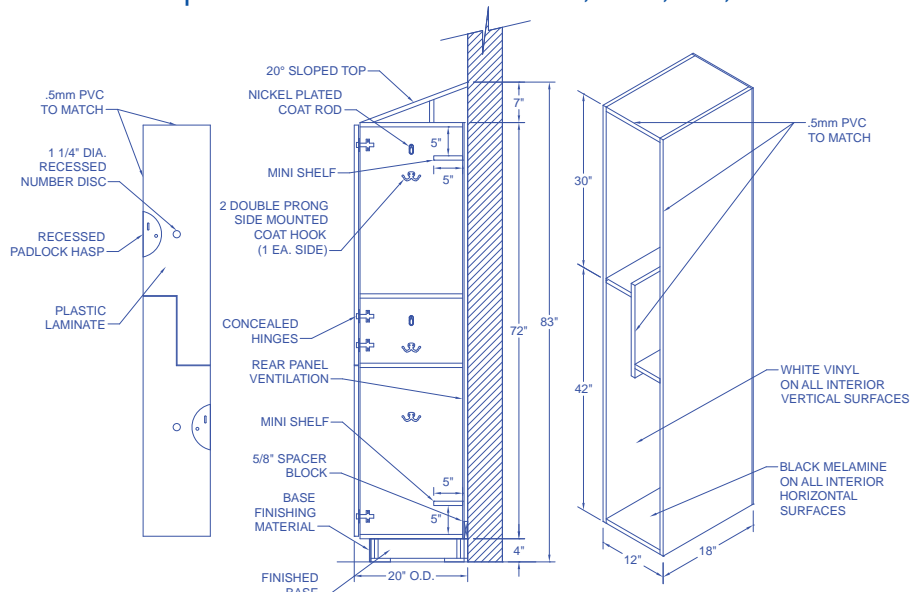
**Plastic Laminate**, class II-B, fire-retardant, water resistant, NEMA LD 3.1 vertical grade .028" thick high-pressure plastic laminate exposed. Available from **Formica®**, **Wilsonart®**, **Nevamar®**, **Pionite®**, and **Laminart®**



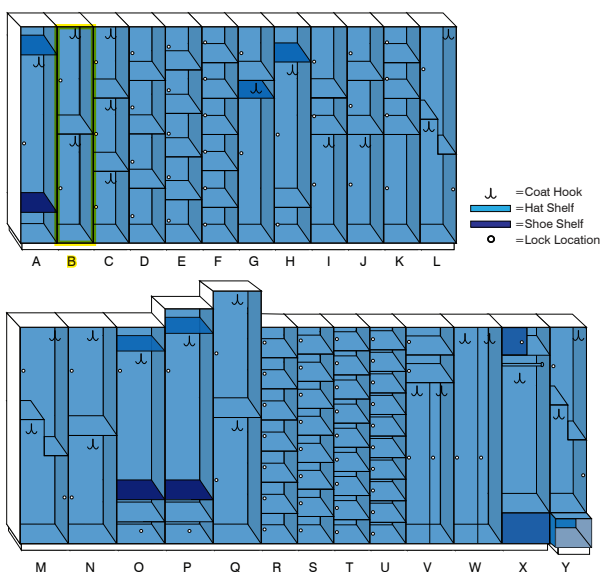
**Wilsonart®**  
**PIONITE®**

**NEVAMAR®**  
**LAMIN-ART**  
THE ART OF LAMINATES

## LOCKER DIMENSIONS | MODEL-L 12"x18"x72" PL, PVC, CH, RP



## LOCKER CONFIGURATIONS



|   |                          |     |     |     |
|---|--------------------------|-----|-----|-----|
| A | One Tier                 | 12" | 18" | 72" |
| B | Standard Two Tier        | 12" | 18" | 72" |
| C | Three Tier - Gymbag      | 12" | 18" | 72" |
| D | Four Tier                | 12" | 18" | 72" |
| E | Five Tier                | 12" | 18" | 72" |
| F | Six Tier - Purse Size    | 12" | 18" | 72" |
| G | Modified Two Tier        | 12" | 18" | 72" |
| H | Modified Two Tier        | 12" | 18" | 72" |
| I | Modified Three Tier      | 12" | 18" | 72" |
| J | Modified Three Tier      | 12" | 18" | 72" |
| K | Modified Four Tier       | 12" | 18" | 72" |
| L | Executive Style Two Tier | 12" | 18" | 72" |
| M | Executive Style Two Tier | 16" | 18" | 72" |
| N | Standard Two Tier        | 16" | 18" | 72" |
| O | Tennis Club              | 16" | 18" | 72" |
| P | Country Club             | 16" | 18" | 78" |
| Q | Maxi-space               | 16" | 18" | 84" |
| R | Seven Tier               | 12" | 18" | 72" |
| S | Eight Tier               | 12" | 18" | 72" |
| T | Nine Tier                | 12" | 18" | 72" |
| U | Ten Tier - Sneaker       | 12" | 18" | 72" |
| V | Vertical Quad Tier       | 16" | 18" | 72" |
| W | Vertical Two Tier        | 16" | 18" | 72" |
| X | Epicenter                | 16" | 18" | 72" |
| Y | 3000 Series Model "L"    | 12" | 18" | 72" |

## PRODUCT SPECIFICATIONS

- Frame Components**
  - Sides = 5/8" density exterior grade medium density fiberboard (MDF), .006" frosty white low pressure laminated vinyl.
  - Shelves = 3/4" 48 lb. density exterior grade medium density fiberboard (MDF), black thermal fused melamine.
  - Backpanel = 1/4" 48 lb. exterior grade medium density fiberboard, .006" frosty white low pressure laminated vinyl.
- Frame Construction** = Blunt joint and nail.
- Edging** (select one)
  - Self-Edging (SE) or (PVC). Available with square cornered doors only. Select from a wide variety of colors to match plastic laminates.
- Hinges** (select one)
  - Heavy duty, euro-concealed, four way adjustable, self-closing, 120 degree opening, self-closing, nickel plated hinges (CH).
- Doors** = 3/4" thick vertical grade .028" class II-B fire retardant plastic laminated two sides and moisture resistant MDF core.



## AIA SPECIFICATIONS

### Section 10500 | Wood Lockers

Requirements of Divisions 0 and 1 apply to work of this Section.

#### 1.0 GENERAL

##### 1.1 Scope of Work Included:

- a. The furnishing and installation of prefabricated WIG type I multiple self-supporting modular water resistant, fire retardant plastic laminated lockers.

##### 1.2 Related Work Specified Elsewhere:

- a. Architectural Woodwork- Section 06400
- b. Wood and Plastic Doors - Section 08200
- c. Wood Windows - Section 08210

##### 1.3 Standards:

- a. Minimum standard for water resistant, fire retardant astic laminate lockers shall conform to WIG P,Manual of Millwork' latest edition.

##### 1.4 Quality Assurance:

- a. All parts and hardware shall be WIG compliant, structurally sound and free from defects in material and workmanship under normal use and service for a period of three (3) years All lock parts to be warrantied for a period of one (1) year.

##### 1.5 Submittals:

- a. Submit two copies of WIG compliant shop drawings for all items of finish work before fabrication.
- b. Manufacturer's descriptive data of all materials and products construction, overall dimensions for installation of lockers, accessories, and trim.
- c. Submit 3 color samples of laminate specified.

##### 1.6 Product Handling, Delivery & Storage:

- a. Deliver all lockers when project construction is ready for installation. Store lockers in dry, ventilated area and protect all finishes from soiling and damage during handling.

#### 2.0 PRODUCTS

##### 2.1 Grades:

- a. Provide water resistant, fire retardant plastic laminate lockers in accordance with WIG "Manual of Millwork", Section 15 - Plastic Covered Casework for Custom and Premium Grade.

##### 2.2 Acceptable Manufacturer:

- a. Ideal Products, Inc., P.O. Box 4090, Ontario, CA 91763, (800) 884-3325 Lockers to be 12" W x 18" D x 72" H, model 'Med-x', series '2000' Water Resistant Plastic Laminate Wood Lockers.

##### 2.3 Materials:

- a. Frame Components:
  1. Core Material: Fiber resin semi-plastic, formal-dehyde-free, 48 lb. density, moisture resistant, exterior grade medium density fiberboard (MDF) using polyurea resin and meeting ASTM D1037-87 six cycle accelerated aging test.
  2. Doors: Plastic laminate, class 11-8, fire-retardant, water resistant, NEMA-LD-1 vertical grade .028" thick high pressure plastic laminate exposed and interior Wilsonart 1573 frost white cabinet liner, 3/4" thickness, radiused corners and flush overlay.
  3. Sides: Scuff resistant 6/1000" thick low pressure laminate frosty white vinyl applied to 5/8" thickness.
  4. Shelves: Mar resistant, thermal-fused black melamine coated: 3/4" thickness.

5. Backpanel: Scuff resistant 6/1000" thick low pressure laminate frosty white finish, 1/4" thickness, ventilated.

##### b. Frame Construction:

1. Square, rigid and without warp, blunt joint and nail, style A frameless, type 1 multiple self-supporting units rigidly joined together.

##### c. Edging:

1. High strength, scratch and impact resistant, water repellent, polyvinyl chloride bumper I-molding, .55 mm, center barb.

##### 2.4 Hardware:

###### a. Hinges:

1. Heavy duty, institutional style, 2-3/4", five knuckle, corrosion resistant, heavy duty european concealed. Two per doors less than 42".

###### b. Locks:

1. Recessed for damage prevention, case-hardened steel, cadmium plated for corrosion resistance padlock hasp, through bolted to side with two 1/4" dia. 5/16" hex head cadmium plated steel bolts and 3/4" dia. t-nuts cadmium plated.

###### c. Number Discs:

1. Recessed flush with face of door, 1 1/4" dia. gravoply finished disc, engraved with 1/4" high black numerals.
2. Ceiling mounted double prong.

###### d. Installation Hardware:

1. 1/4" x 1 1/4" hex head, cadmium plated bolts three (3) per frame to connect lockers to lockers.
2. 1 1/2" x 6" cadmium plated 16 gauge sheet straps for anchoring locker banks to wall or other locker banks. Place one every 4 to 5 feet.

##### 2.5 Fabrication:

- a. Fabricate lockers square, rigid, and without wrap, with finished faces flat and free of scratches and chips.

#### 3.0 EXECUTION

##### 3.1 Construction:

- a. Conform to requirements of WIC "Manual of Millwork", latest edition, for joinery requirements using blunt joint and nails.

##### 3.2 Installation:

- a. Install lockers at the locations shown on plans. All lockers to be securely anchored to walls and bases with approved fastenings such as provided by manu-facturer and listed above with installation hardware.
- b. Adjust doors and latches to operate easily without bind.
- c. Replace any defective doors or other components.
- d. Attach numbers in sequence, end & corner fillers & caps, finished end panels, sloped tops, etc. after lockers are in place, leveled and securely anchored.

##### 3.3 Clean-Up:

- a. Upon completion of the work, remove surplus materials, rubbish and debris resulting from the operations under the section, including equipment and implements of service, and leave the entire structure and site insofar as the work of this section concerned in a neat, clean, and acceptable condition.

## ORDERING INSTRUCTIONS

### Example:

Med-X 2000 Series, Model L, 12 x 18 x 72", PL, RP, CH, RP  
1 2 3 4 5 6 7

- 1 Specify Med-X 2000 Series for Water-Resistant, Fire-Retardant Plastic Laminate Wood Lockers.
- 2 Select the style and size locker compartment such as Model 8, our standard double tier or Model F, our purse size lockers
- 3 Confirm the frame dimensions: Width x Depth x Height.

- 4 Select plastic laminate as your exterior surface and choose any color or combination of colors.

- 5 (5) Specify Lock Type: (RP) = Recessed Padlock Hasp; (PC) = Pushbutton Combination; (DC) = Dial Combination; (CL) = Card Lock; (CO) = Coin-Operated; (CC) = Coin-Collect; (KL) = Keyed.

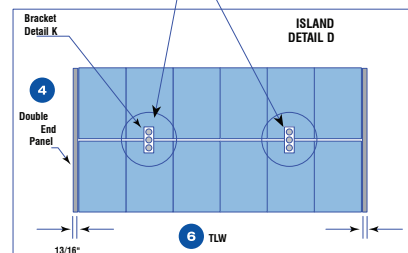
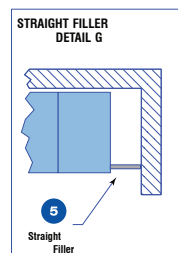
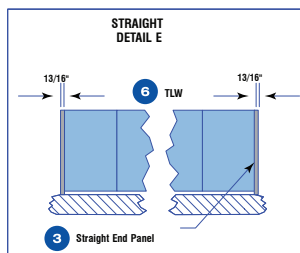
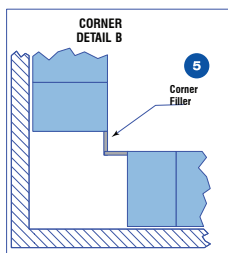
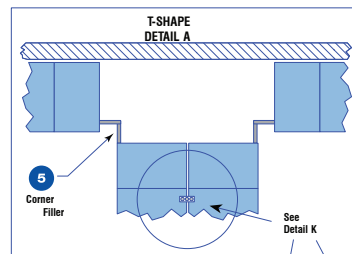
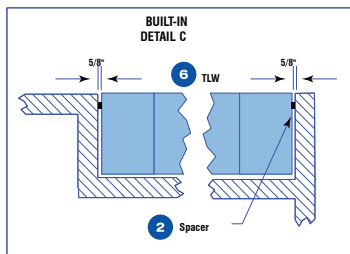
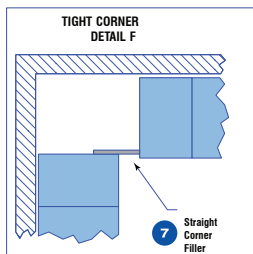
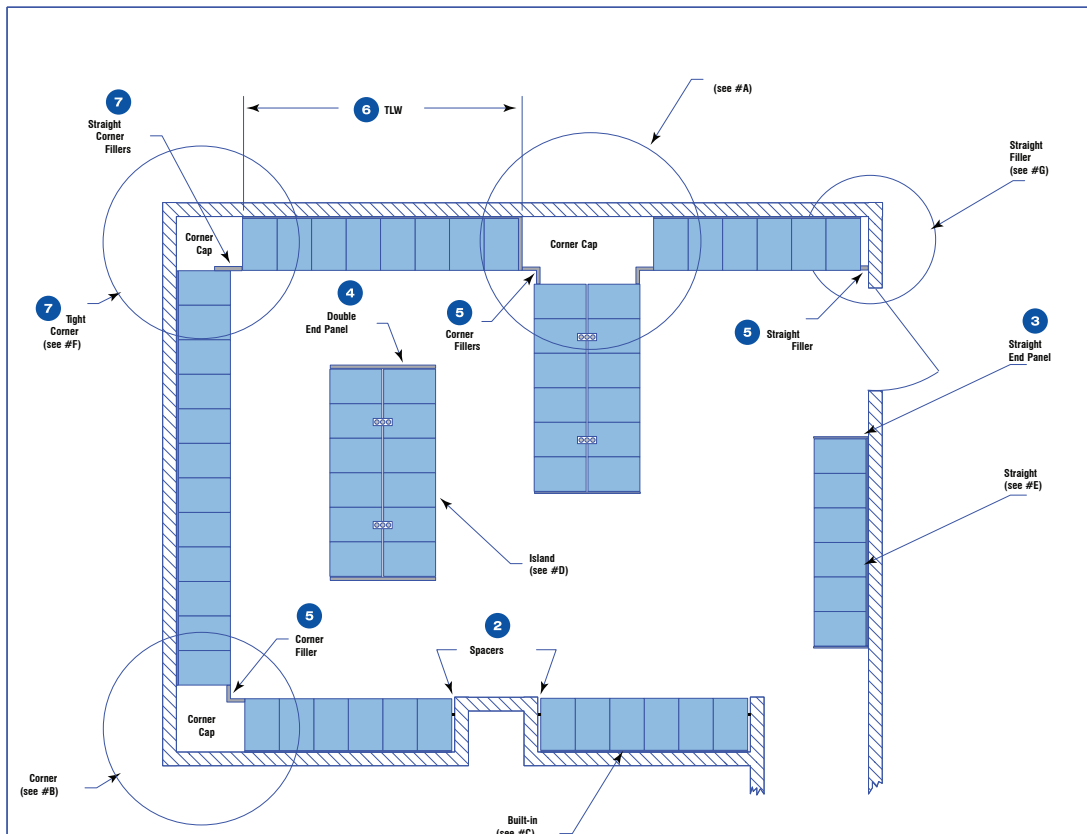
- 6 Specify Hinges. (CH) = Concealed Hinge, (EH) = Exposed Knuckle.

- 7 Specify Edging: (VT) = Polyvinyl Chloride T-molding; SE or PVC= Self Edging.

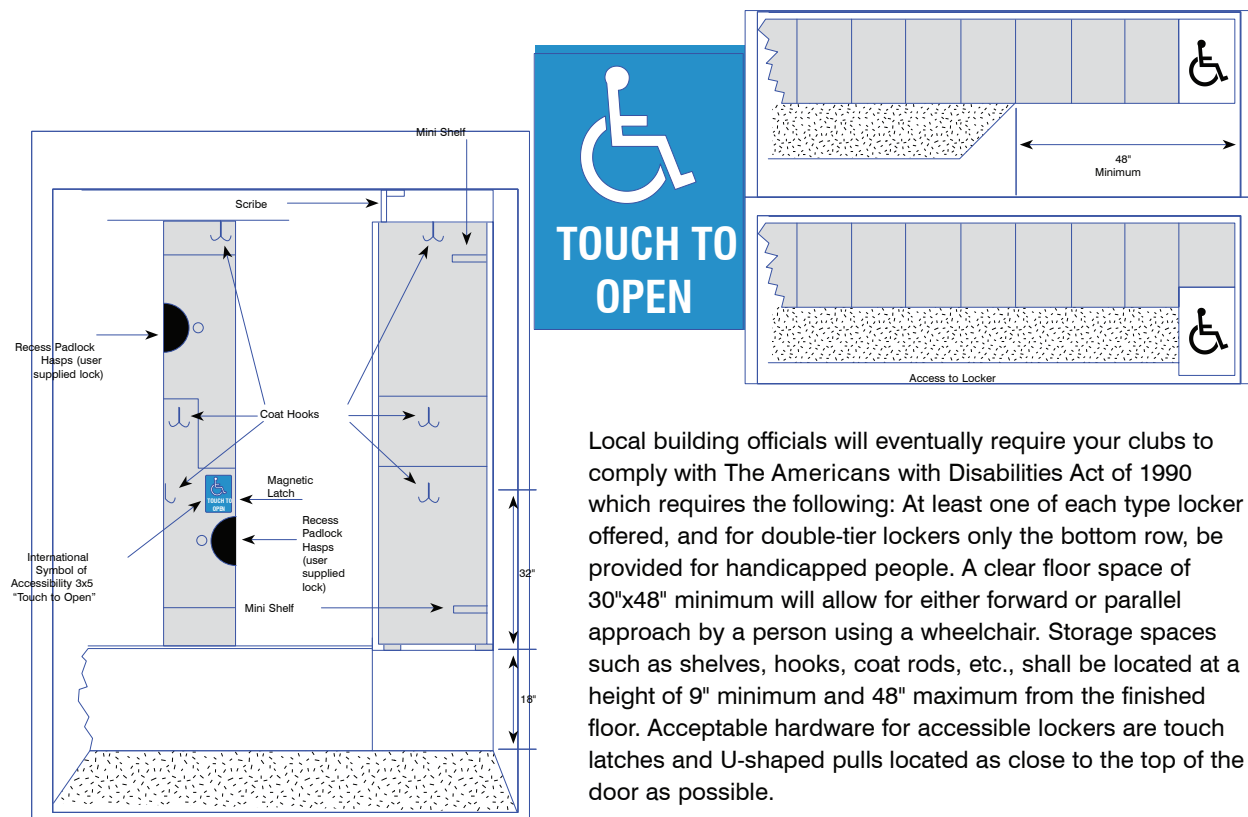
## LOCKER ROOM DIAGRAMS

### General Notes

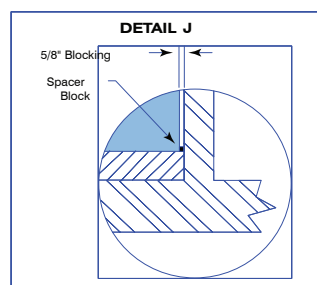
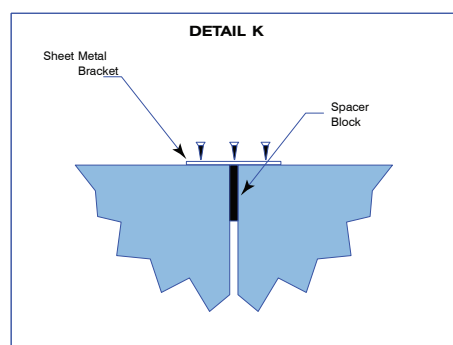
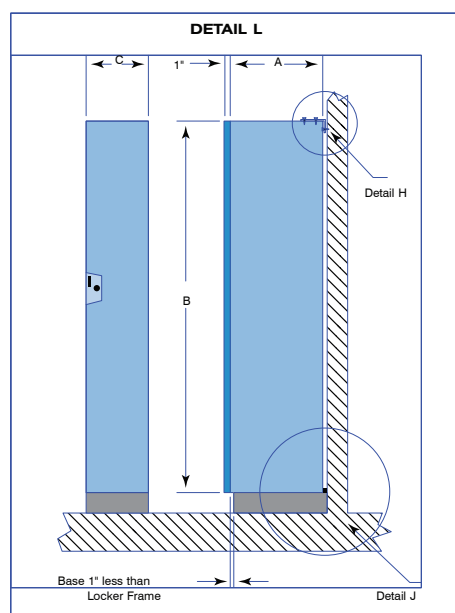
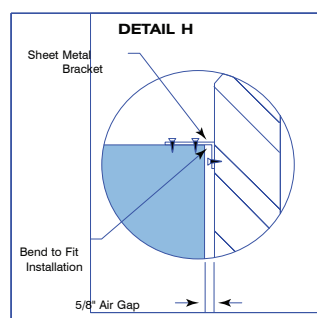
- Locker to be standard as manufactured by Ideal Lockers.
- $\frac{5}{8}$ " spacers edged with matching edging to allow for hand clearance.
- Single end panels  $18\frac{5}{8}$ " wide to cover rear ventilation.
- Double end panels  $36\frac{5}{8}$ " wide to allow for air space.
- Fillers are required.
- TLW (total locker width) = Total number of lockers x locker width. 12" lockers are 12.0625" wide; 16" lockers are 16.0625" wide.
- Consult factory for requirements.



## HANDICAPPED OPTIONS



Local building officials will eventually require your clubs to comply with The Americans with Disabilities Act of 1990 which requires the following: At least one of each type locker offered, and for double-tier lockers only the bottom row, be provided for handicapped people. A clear floor space of 30"x48" minimum will allow for either forward or parallel approach by a person using a wheelchair. Storage spaces such as shelves, hooks, coat rods, etc., shall be located at a height of 9" minimum and 48" maximum from the finished floor. Acceptable hardware for accessible lockers are touch latches and U-shaped pulls located as close to the top of the door as possible.





*IDEAL PRODUCTS, INC. • P.O. BOX 4090 • ONTARIO, CA 91761 • (951) 727-8600 • (951) 727-8612 FAX • [WWW.IDEALOCKERS.COM](http://WWW.IDEALOCKERS.COM)*